



BIM-backpack L-Scan Nano

Cost-effective SLAM technology for 3D scanning in construction without using GPS/GNSS

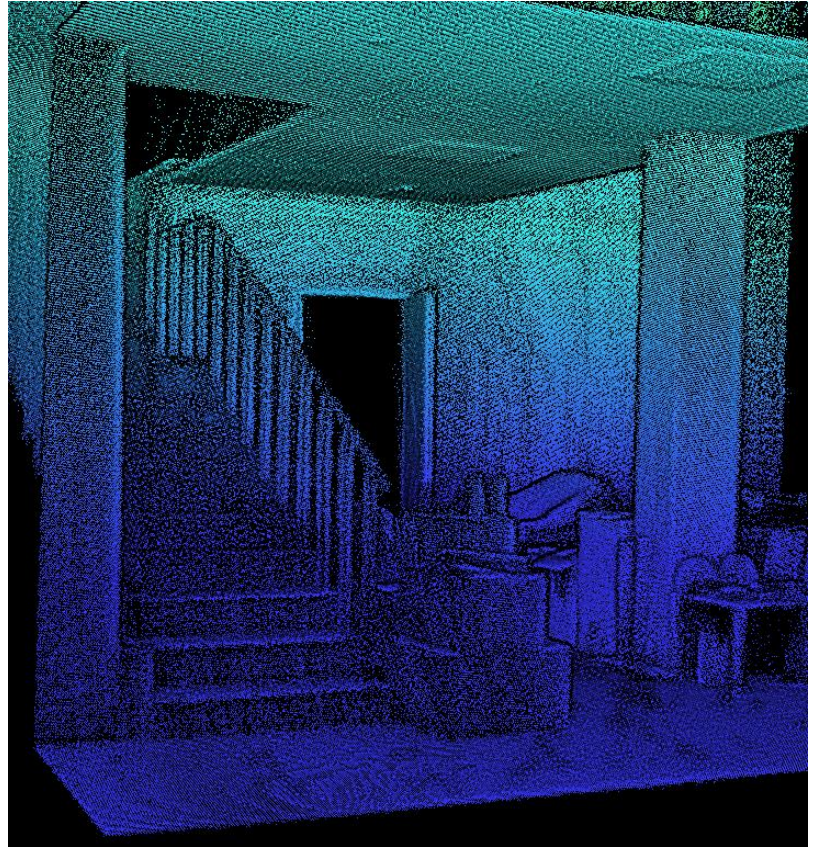


Backpack format

It is the appropriate choice for more than 8 hours survey of several buildings

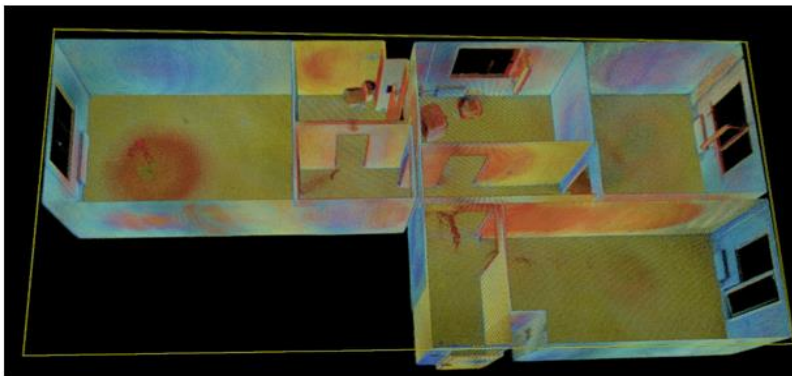
Manual format

It is the appropriate choice for 2 hours survey with a single replaceable battery in the handle

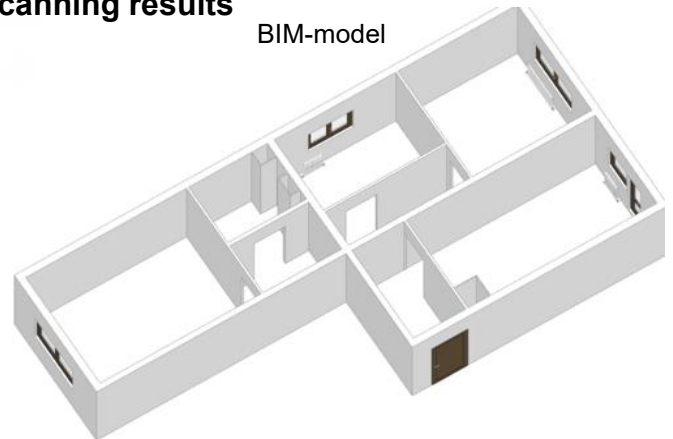


BIM technology uses scanning results

Point cloud



BIM-model



Specification	Value
Point Rate	200,000 points/s
Detection Range	40 m @ 10% reflectivity
	70 m @ 80% reflectivity
Range Precision (1σ)	2 cm
Field of view - vertical	59°
Field of view - horizontal	360°
Frame Rate	10 Hz
Operating temperature	-20° to 55°
Laser wavelength	905 nm
Laser Safety	Class 1 (Eye Safety)

The use of the digital platform at the construction stage reduces: ⚡

- 2 times - costs for support and control of construction
- 2-5 times - deadlines for correcting comments
- 5 times - deadlines for execution of executive documentation ⚡
- by 20% - construction time

Source: MGSU report, 2022

Manufacturer: Ryegrass LLC, Russia

Address: 42 Bolshoi Blvd., Bldg.1, Territory of the Skolkovo Innovation Center, Moscow 121205, Russia

Tel. +7 495 9707713 Mob. +7 985 9707713 Email: info@ryegrass.ru Internet: www.ryegrass.ru